

PLAN VIEW

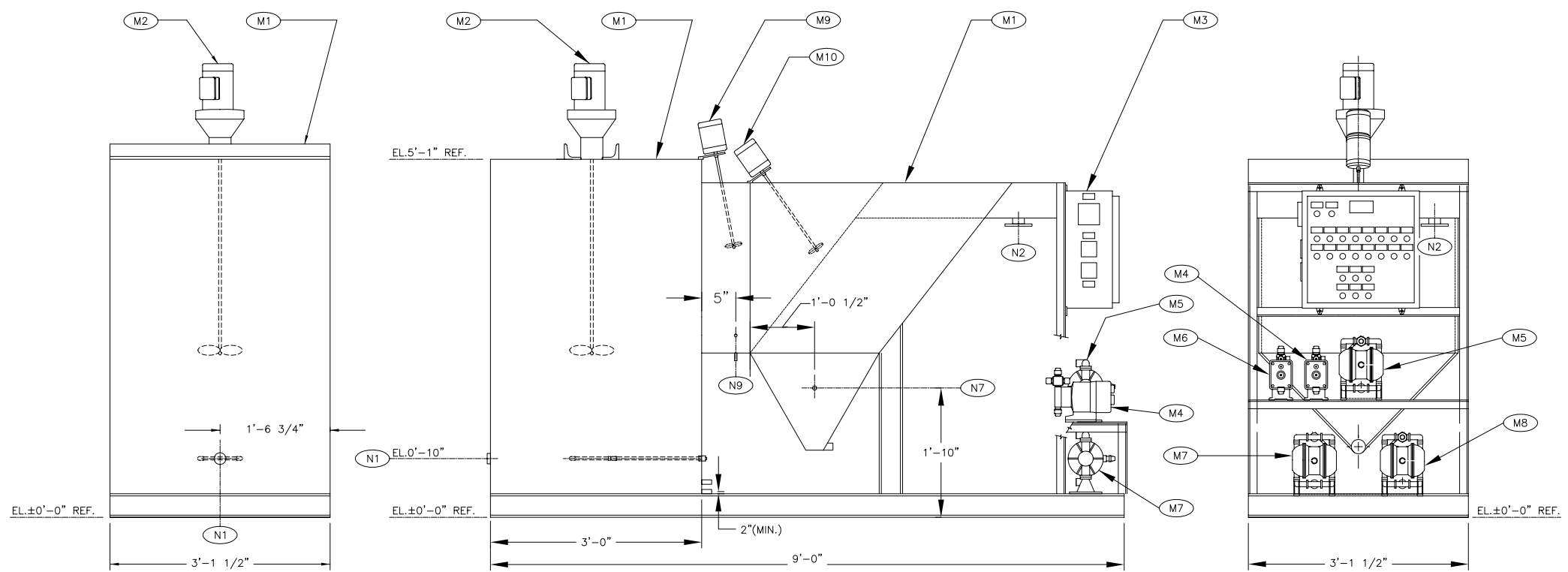
CUSTOMER CONNECTIONS			
ITEM	QTY.	NOZZLE DESCRIPTION	SERVICE
N1	1	1" FPT	INFLUENT
N2	1	2" FPT	EFFLUENT
N7	1	3/4" MPT	TEST PORT
N9	1	1/2" FPT W/PUU	DRAIN
N10	1	1" FPT (AS LOW AS POSSIBLE)	DRAIN

EQUIPMENT DESCRIPTION		
ITEM #	TAG #	DESCRIPTION
M1	CLR-1	REACTOR / CLARIFIER C.S. LINED TANK , 10 GPM MAX.
M2	M-R1-1	REACTOR MIXER, 3/4 HP/110VAC/1PH/60Hz.
M3	CP-CLR	110 VAC / 1 PH/ NEMA4 MAIN CONTROL PANEL
M4	P-R1-1	2 GPH. 30% FERROUS FEED PUMP , 1/4" NPT
M5	P-R1-2	AIR OPERATED LIME METERING PUMP 1/2"
M6	P-R1-31	2 GPH. 1 % POLYMER SOLUTION FEED PUMP , 1/4" NPT
M7	P-CL1-1	AIR OPERATED SOLIDS TRANSFER PUMP, 0.5" INLET/OUTLET, 1/4" AIR
M8	P-CL1-2	AIR OPERATED SOLIDS RECYCLE PUMP, 0.5" INLET/OUTLET, 1/4" AIR
M9	M-CL1-1	FLASH MIXER, 1/4HP, 90VDC W/SPEED CONTROLLER
M10	M-CL1-2	FLOC MIXER, 1/4 HP, 90VDC, GEAR DRIVE,400 RPM MAX.

GENERAL NOTES:
 1. PUMP SKID UTILITY REQUIREMENTS:
 A.) PLANT AIR AT MINIMUM 90 PSIG.
 B.) POWER AT 120 VAC, 60 Hz.
 45 AMP SERVICE

REFERENCE DRAWINGS

- 1. - PROCESS & INSTRUMENTATION DIAGRAM.
- 2. - PROCESS FLOW DIAGRAM.



LEFT SIDE VIEW

FRONT ELEVATION

RIGHT SIDE VIEW

DESIGN DATA			
DESIGN PRESSURE PSIG	ATM.	OPERATING PRESSURE PSIG	ATM.
DESIGN TEMP. DEG. F	140	OPERATING TEMP. DEG. F.	70
LIQUID	WASTEWATER	SP. GRAVITY	1.05
DRY WT. LBS	APPX. 800	OPERATING WT. LBS	3500LBS
TANK VOL. GAL.	XXXX	OPERATING CAP. GAL. MAX	10GPM
LOADS APPLIED BY MIXER			
DOWNWARD LOAD LBS	MOMENT IN.-LBS	TORQUE IN.-LBS	
250	1506	1501	

					DR.	I.D. NO.:	5gpmskid	CUSTOMER: UNIPURE 5 GPM TREATMENT SKID GENERAL ARRANGEMENT & CUST. CONN UNIPURE TREATMENT SYSTEM			
					DSGN.	PROJECT NO.					
					CK.	DWG. SCALE	1"=1'-0"				
					AP.	PLOT SCALE	1"=1'-0"				
				DATE			DWG. No.	5GPMskid	REV. No.	A	
NO. 1 REVISION DESCRIPTION ISSUED FOR CUST. INF. RD RD xx/xx/xx				NO. 2 REVISION DESCRIPTION -CONFIDENTIAL- NOT TO BE DISCLOSED, USED OR DUPLICATED EXCEPT AS AUTHORIZED IN WRITING BY UNIPURE							